

D7200 – Troubles:

How Many itb's on one unit?

Several itb's for diff scanning progs – can use many itb's on unit, but limited to unit's *memory* capacity.

LOADING ITSN:

- DO NOT LOAD via Start/Progs/Batch/install client!
- Just load the itb via either Prog Gen or Upload Util
 - But MUST CHECK THE REINITIALIZE box – this loads the client too.

FILENAME LENGTH = Max **8** chars !

ITSN is **supported** only if = "Mainboard common" (mfg thing) and min 512mb mem.

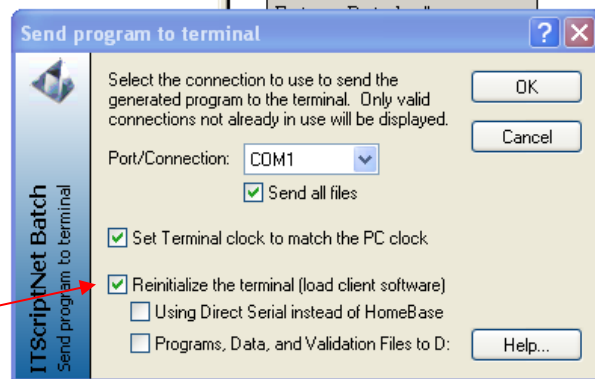
NO DATA DOWNLOAD: DL to PC is not being transferred

- Check if it shows connection to the HW via ActiveSync
- Uncheck Com box in ActiveSync
- Reset baud on unit to 57.6k (via sw on unit because it is DOS device- SEE BAUD FILE)
- Do shutdown (not restart) and boot up of PC to clear com port connection (was conn to something else?)

Upgrade client error:

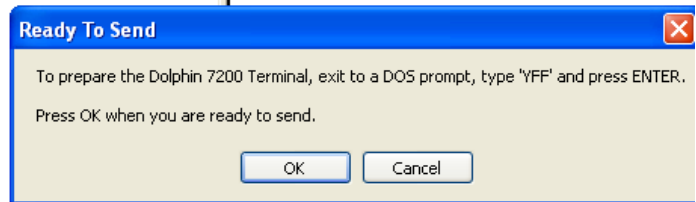
When upload new itb program, get error:
"upgrade client"

Reinstall itb and reinitialize Batch



Check if have 2 clients on same unit:

- Reboot unit : Shift + Bksp + ON simultaneously
- When see the ITSN logo, look underneath for the unit name and to the right of that, whether says **Laser or 2D**.
- If both are loaded: loading the other one will not overwrite the first; could have both 2D and Laser on the unit – our SW will load the Laser FIRST, then the 2D. The Laser client is not compatible when on a 2D device. They are two separate clients.



To remove one client from terminal that has two:

(D72BAT = laser; D72BAT2D = 2D)

1. Go to DOS on terminal
2. At C:\ - Type in: `CD itbatch` and press enter (space after the CD – stands for change dir)
3. Will show path at C:\itbatch
4. Type in: `Dir/P` (will show list of directory files and pause at each group that fills the screen)
5. Look for: D72BAT2D.exe and D72BAT.exe
6. Type in: `Del (space) D72BAT.exe` and press enter
7. It will go back to C:\itbatch
8. Reboot the terminal (Shift + Bksp + ON)

When it gets back to the ITSN logo – make sure underneath it says: 7200 2D

